

# F-ONE

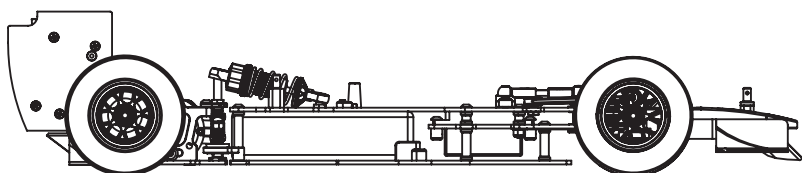
M A D E I N I T A L Y

014

**1:10 SCALE**  
**ELECTRIC POWER**



## ***instruction manual***



## INTRODUCTION

F-ONE is a new generation high quality 1/10 scale formula car.  
F-ONE is supplied in a box equipped with Instruction Manual.  
Its use is intended for more than 16 years old persons with experience on rc model car field.  
Children and all the persons without this requirement **MUST** have direct supervision of a knowledgeable adult responsible.

## SAFETY PRECAUTIONS

Instruction Manual **MUST** be read and fully understood before to start building and operating functions.  
Always keep Instruction Manual in safety place, ready to be consulted for any reference you need.  
Use only original WRC spare parts.

## GENERAL INFORMATION

Assemble the kit only away from the reach of children.  
Follow the building and operating instructions using the utmost care.  
Don't put any part of your body inside rotating and moving elements as this may cause damage or serious injury.  
Check and clean the model before putting it away.  
Don't use your model car in public places or in roads and areas where it could generate conflict with person or vehicular traffic.  
The model car is controlled by radio: you **MUST** put great care to avoid loss of radio control always keeping a safety margin all around your model in order to prevent any collision.  
Operating frequency: check and be sure it is clear and not shared with anybody at same time; it could cause loss of control of the RC model.  
Always turn on your transmitter before you turn on the receiver in the car and always turn off the receiver before you turn off your transmitter.  
Keep the wheels of the model off the ground when checking the operation of the radio equipment.  
Disconnect the battery pack before storing your model.

## WARRANTY

WRC guarantees this model kit to be free from defects in both material and workmanship within 30 days of purchase.  
The total monetary value under warranty will in no case exceed the cost of the original kit purchased.  
This warranty doesn't cover any components damaged by use or modification or as result of wear.  
Part or parts missing from this kit must be reported within 30 days of purchase.  
No part or parts will be sent under warranty without proof of purchase.  
If you find a defective or missing part, contact the local distributor.  
Customer service and support will be provided through local hobby store.  
No warranties are expressed or implied that cover damage caused by what is considered normal use or cover or imply how long any model cars' components or electric components will last before requiring replacement.  
Due to the high performance level of this model car you will need to periodically maintain and replace consumable components; any and all warranty coverage will not cover replacement of any part or component damaged by neglect, abuse or improper or unreasonable use.  
This includes but is not limited to damage from crashing, excessive moisture, improper use or no maintenance or user modifications which compromise the integrity of components.  
Warranty will not cover components that are considered consumable on RC model car.  
WRC doesn't pay nor refund on any component sent from WRC or its distributor for warranty.  
WRC reserves the right to make final determination of the warranty status of any component or part.  
Use only original WRC spare part:

## CUSTOMER SUPPORT

Please don't hesitate to contact WRC support at [info@wrc-racing.com](mailto:info@wrc-racing.com) for any problem or question.  
Also kindly visit our website [www.wrc-racing.com](http://www.wrc-racing.com) to find last updates, set-up information, option parts and other information.

### W.R.C. world racing car s.r.l.

Via Meucci, 23/B  
36040 Brendola (VI)  
**ITALY**

Phone: 0039 0 444 401138  
fax: 0039 0 444 401139  
E-mail: [info@wrc-racing.com](mailto:info@wrc-racing.com)  
Website: [www.wrc-racing.com](http://www.wrc-racing.com)



## TECHNICAL INFORMATION

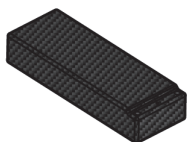
- TRANSMISSION: 2 DRIVE WHEELS
- BODY: LEXAN FORMULA MODEL
- ADJUSTABLE FRONT TOE, CAMBER AND CASTER
- ADJUSTABLE REAR HEIGHT
- BUMPER /FRONT BACKSTOP
- CARBON RADIO PLATE
- CARBON CHASSIS 2mm
- FULL BALL BEARING
- ADJUSTABLE BALL DIFFERENTIAL

## TECHNICAL DATA

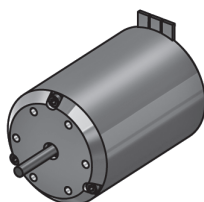
- LENGHT .....418 M.
- WIDTH ..... 190MM.
- ADJUSTABLE WHEEL BASE ..... 269-265MM.
- WEIGHT COMPLETE CAR.....1080Gr.

## REQUIRED BUT NOT INCLUDED IN THE KIT

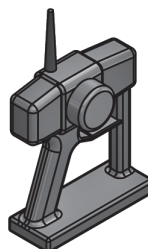
ADDITIONAL ITEMS NEEDED FOR COMPLETION



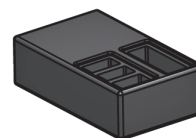
LIPO BATTERY SHORT 7.4 V.



ELECTRIC MOTOR



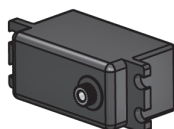
TRANSMITTER



RECEIVER



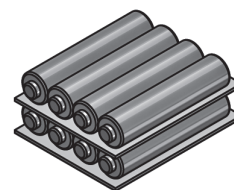
SPEED CONTROLLER



LOW PROFILE STEERING SERVO



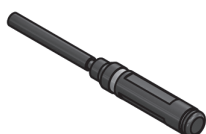
WHEEL - TYRES - INSERTS



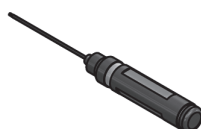
AA ALKALINE BATTERIES  
FOR TRANSMITTER

## TOOLS REQUIRED

THESE TOOLS ARE NOT INCLUDED IN THE KIT BUT ARE REQUIRED FOR PROPER ASSEMBLY



SOCKET:  
5.5 MM.  
7.0 MM.



ALLEN:  
1.5 MM.  
2.0 MM.  
3.0 MM.



RING PLIERS



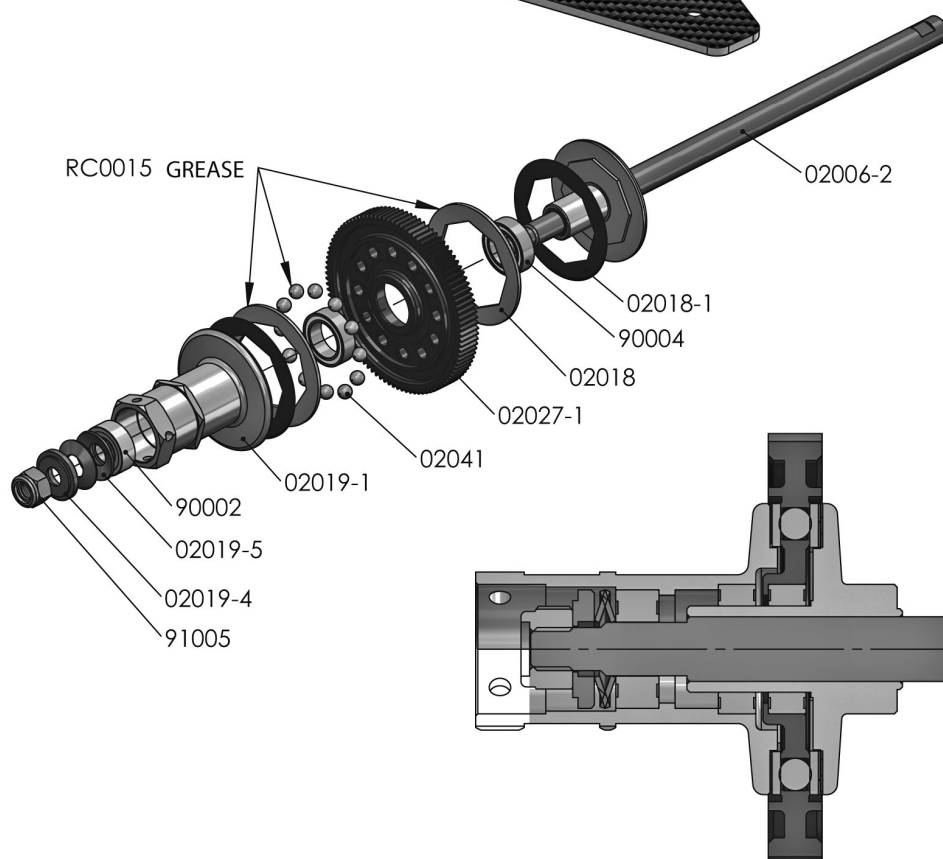
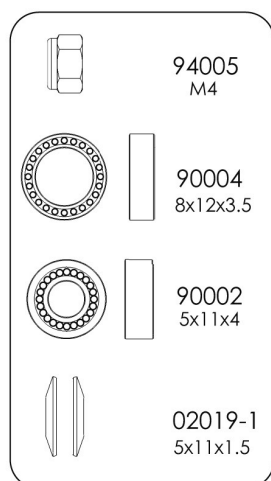
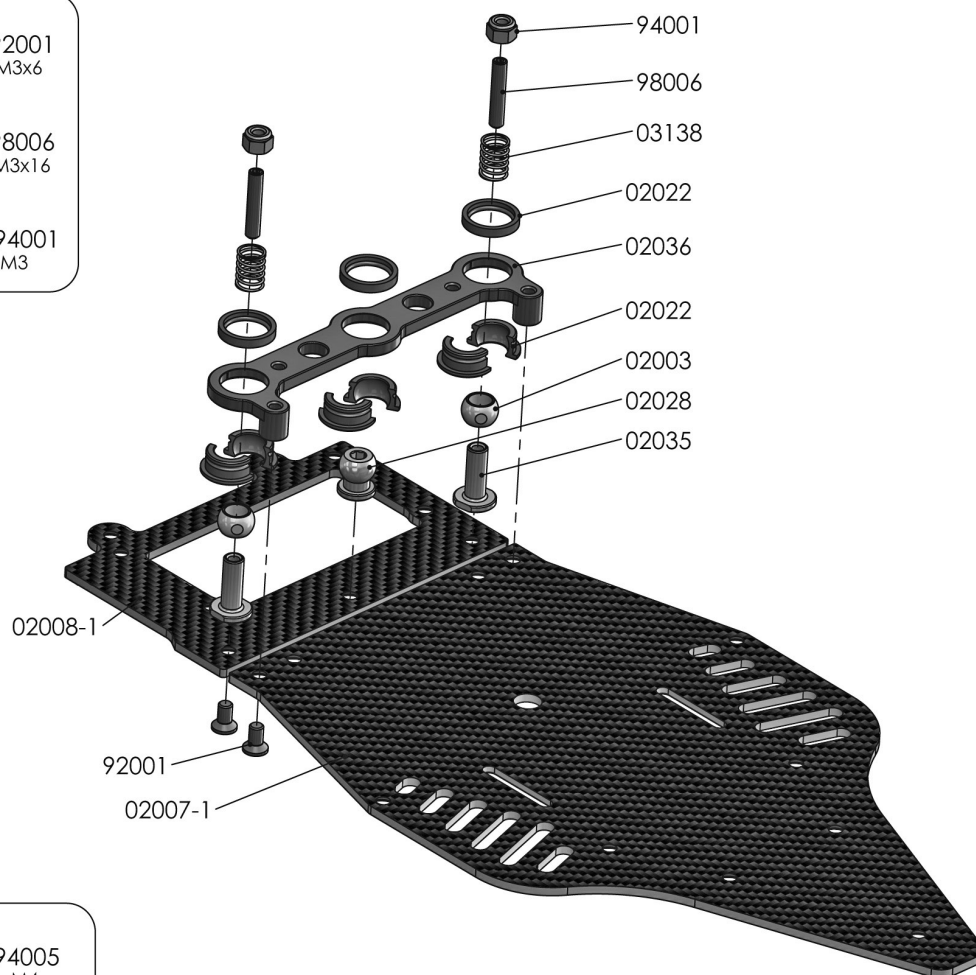
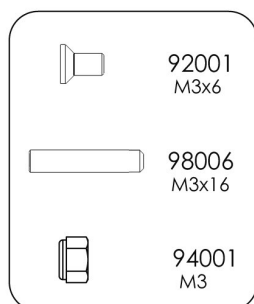
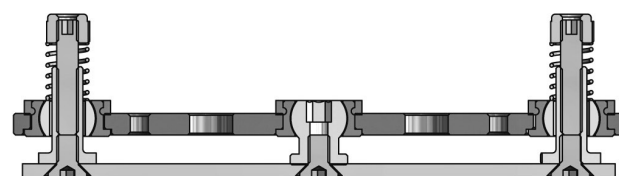
SIDE CUTTER



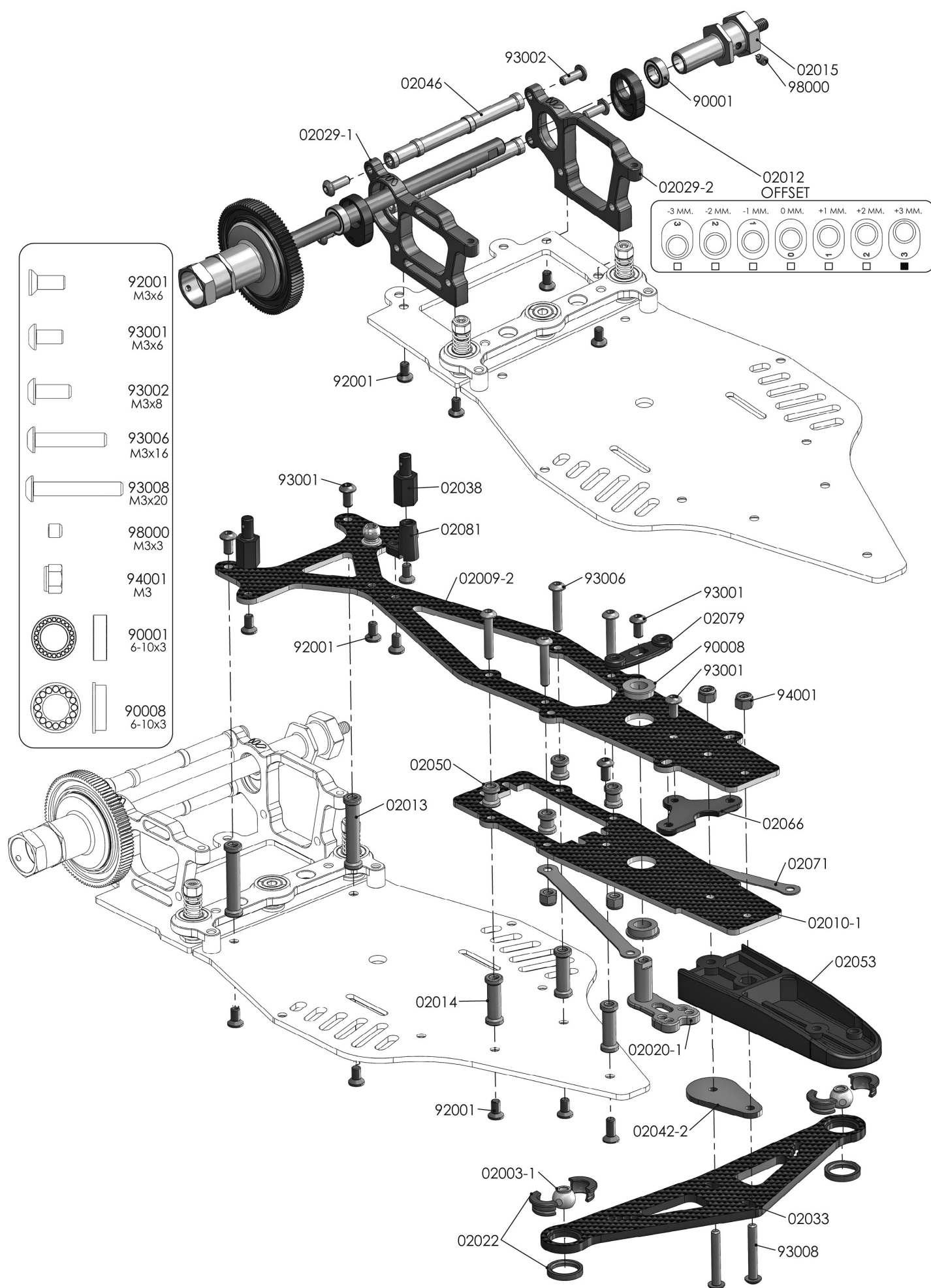
SCISSORS

## NOTICE:

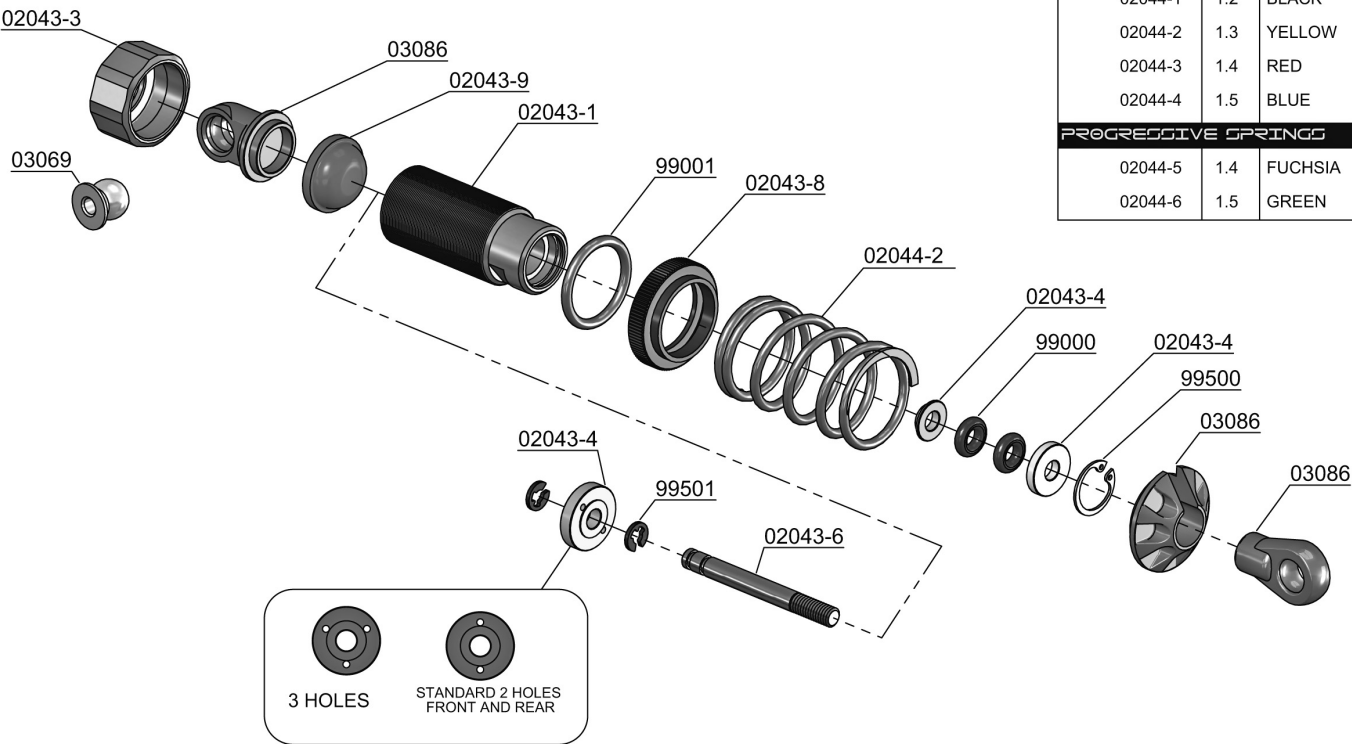
THE FOLOWING ITEMS ARE NEEDED FOR COMPLETION PF THE STX; THEY ARE NOT INCLUDED IN THIS KIT (UNLESS NOTED)  
AND SHOULD BE OBTAINED FROM YOUR LOCAL HOBBY SHOP.  
BE SURE TO READ THE INSTRUCTION COMPLETELY PRIOR TO ASSEMBLY



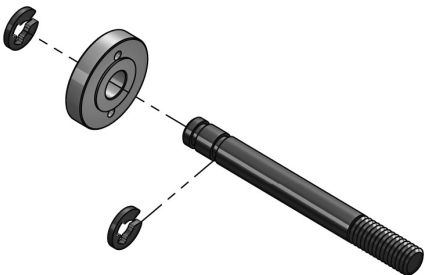




SPRINGS LIST		
02044-1	1.2	BLACK
02044-2	1.3	YELLOW
02044-3	1.4	RED
02044-4	1.5	BLUE
PROGRESSIVE SPRINGS		
02044-5	1.4	FUCHSIA
02044-6	1.5	GREEN

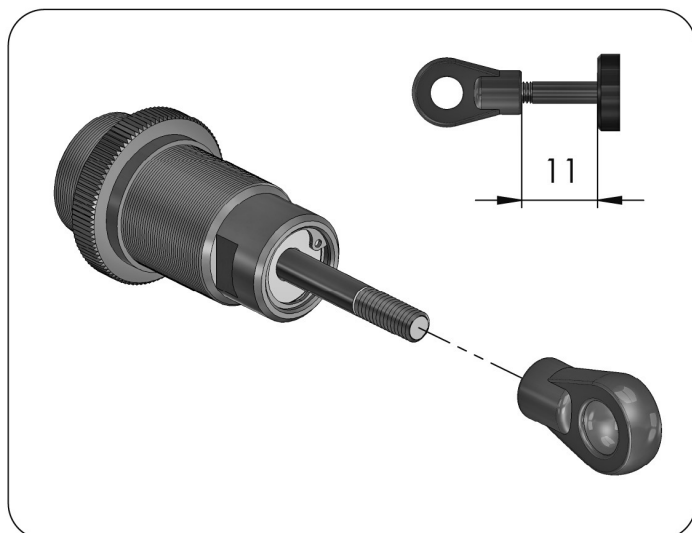



CUTAWAY VIEW



CUTAWAY VIEW







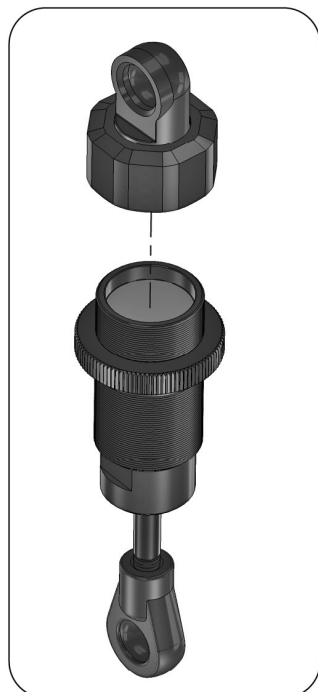
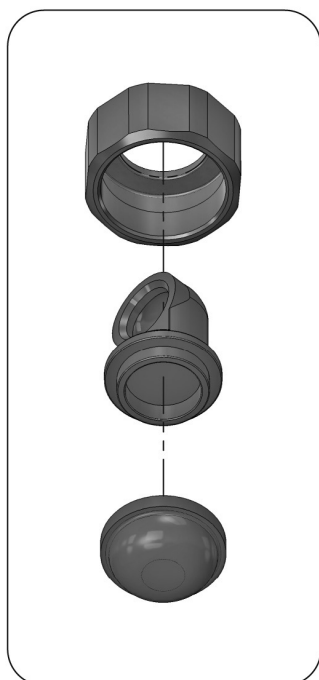
**SHOCK FILLING**

Fully extend the piston rod so the piston is at the bottom of the shock body.

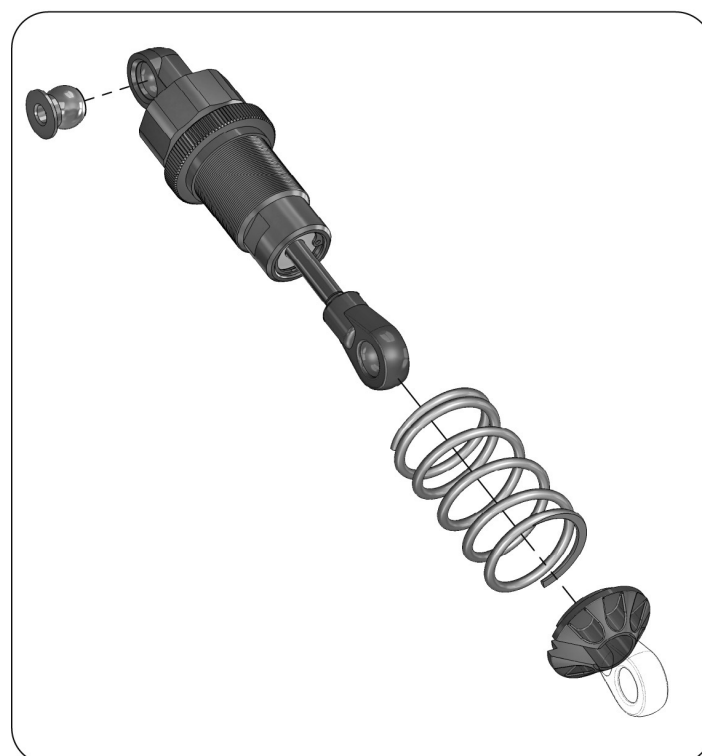
Hold the shock upright and fill the shock body with shock oil as in the picture.

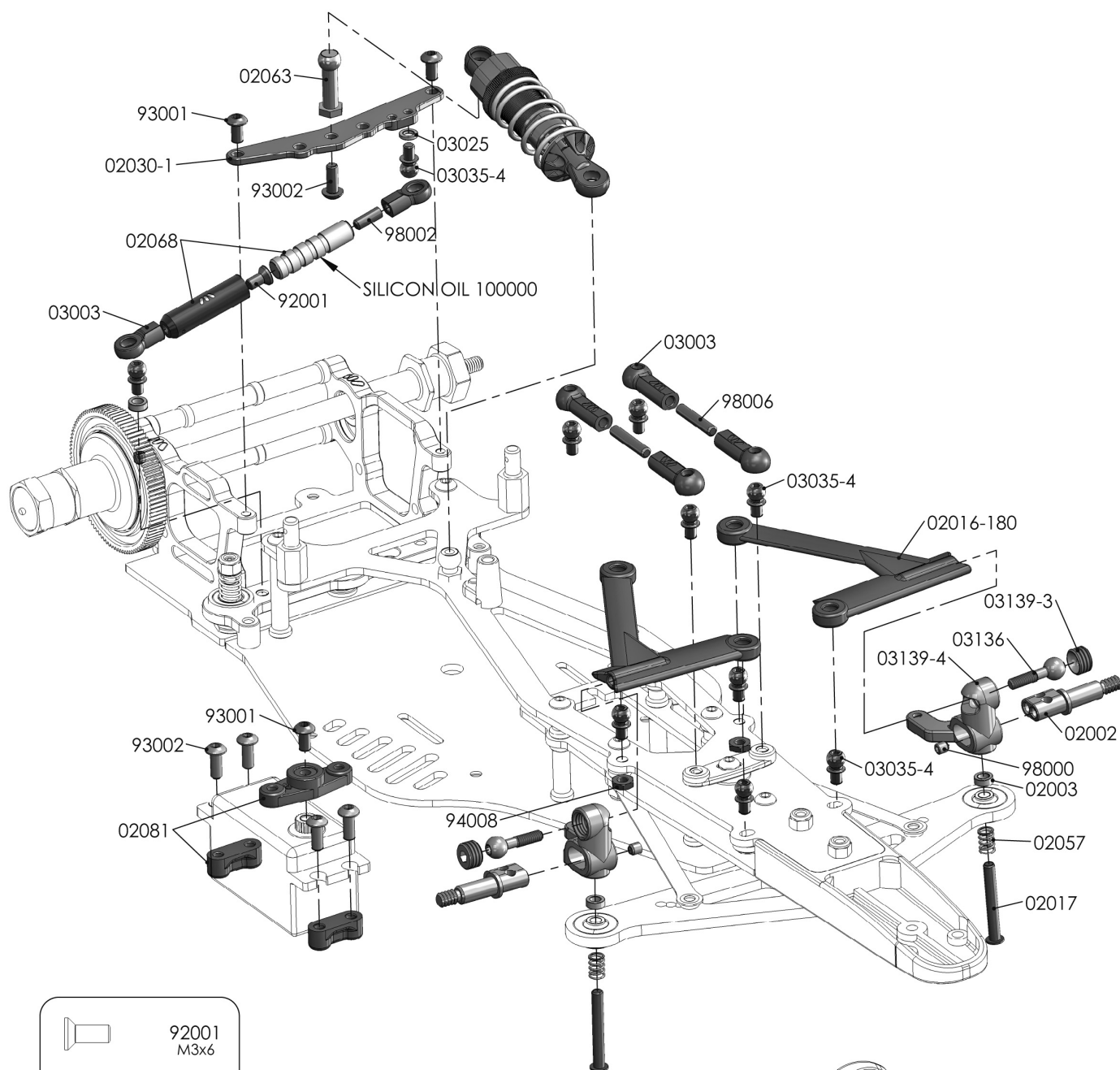
Let the oil settle and allow air bubbles to rise to the top. Slowly move the piston up and down until no more air bubbles appear. Add shock oil as necessary.

Pull the piston rod most of the way out of the shock bod. Let the shock rest for 5 minutes to allow the air bubbles to scape.

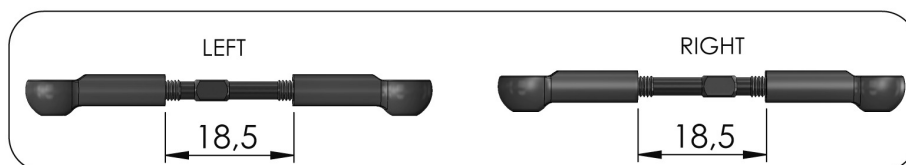
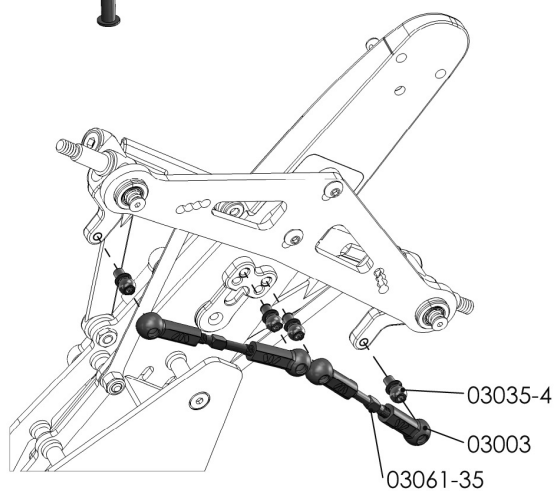


WRC SHOCK OIL	
CODE	CST
RC0028	200
RC0029	400
RC0030	600 IN KIT
RC0031	800
RC0032	1000

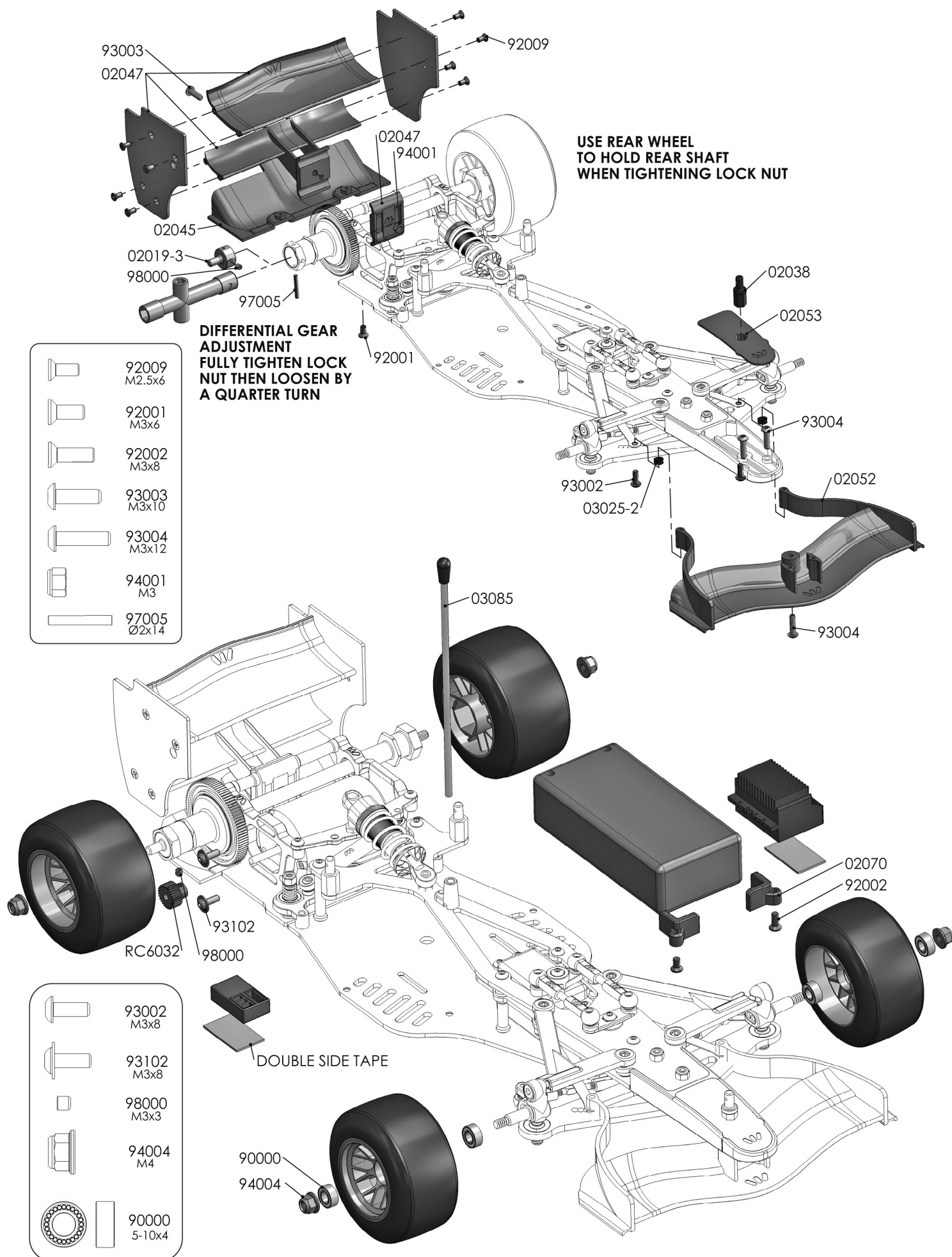




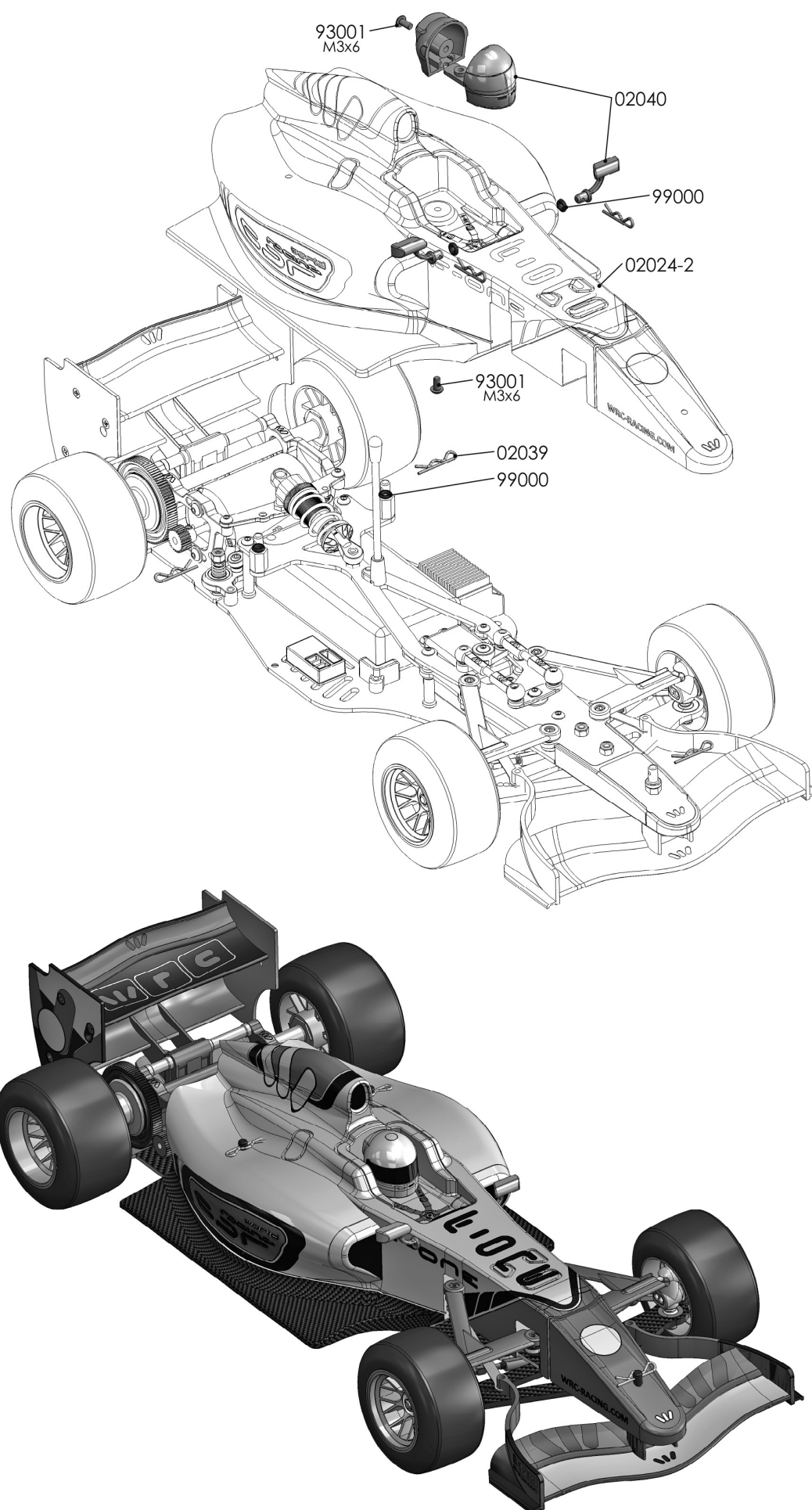
	92001 M3x6
	93001 M3x6
	93002 M3x8
	98000 M3x3
	98002 M3x8
	98006 M3x16
	94008 M3x2











<b>NAME</b>	_____
<b>DATE</b>	_____
<b>TRACK</b>	_____

TRACK CONDITION		
SURFACE	<input type="radio"/> CARPET	<input checked="" type="radio"/> ASPHALT
TRACTION		
<input type="radio"/> LOW	<input checked="" type="radio"/> MEDIUM	<input type="radio"/>

DRIVE RATIO	
PINION	SPUR
32	98

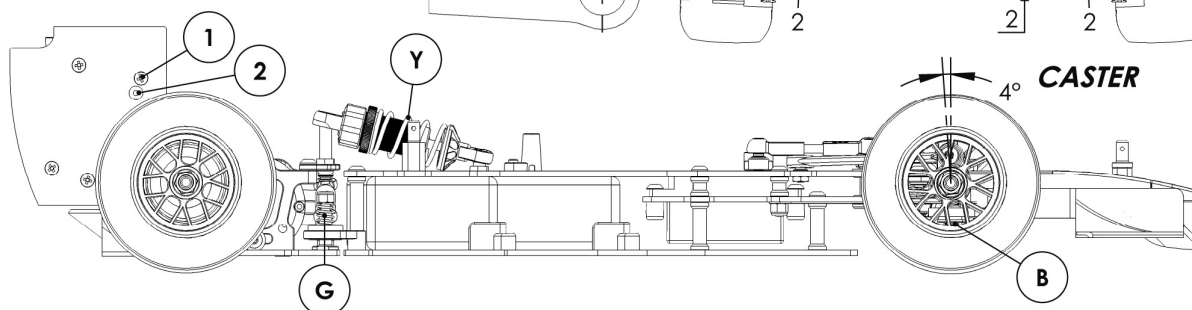
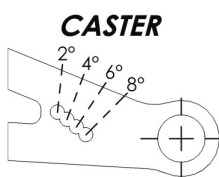
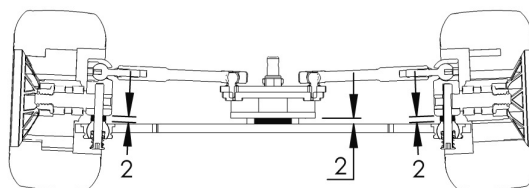
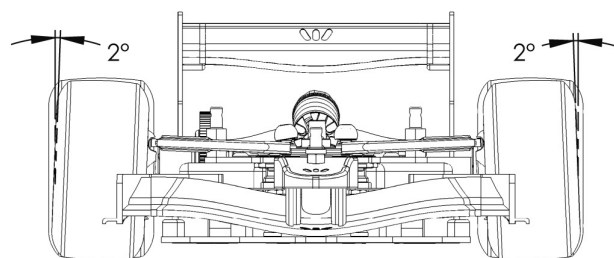
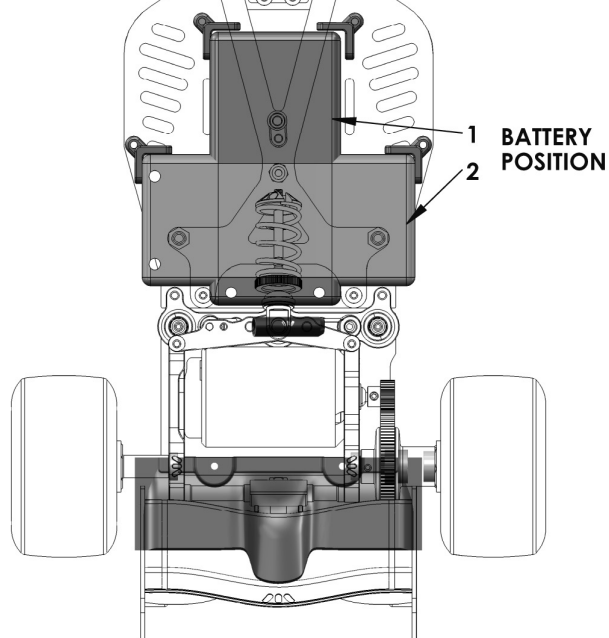
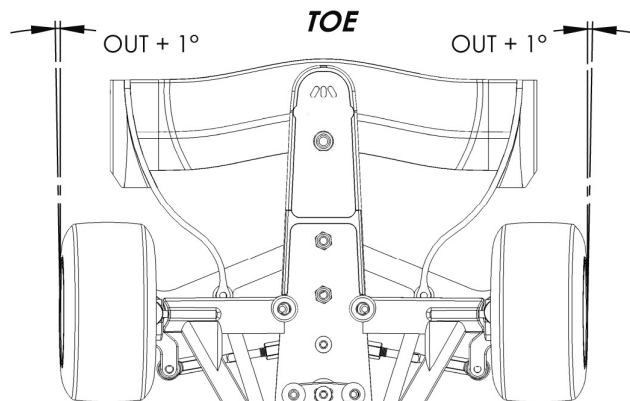
TYRES	MODE	TYPE
FRONT	RIDE	RUBBER
REAR	RIDE	RUBBER

SPRINGS		
FRONT		BLACK (B)
REAR		GOLD (G)
DAMPER		YELLOW (Y)

OIL	VISCOSITY	PISTON HOLES
DAMPER	600	2

REAR WING		
<input type="checkbox"/>	①	LOW
<input checked="" type="checkbox"/>	②	HIGH

REAR HEIGHT							
-3 MM.	-2 MM.	-1 MM.	0 MM.	+1 MM.	+2 MM.	+3 MM.	
<input type="checkbox"/>	<input type="checkbox"/>	<input type="checkbox"/>	<input type="checkbox"/>	<input type="checkbox"/>	<input type="checkbox"/>	<input type="checkbox"/>	<input checked="" type="checkbox"/>
FRONT HEIGHT							
2 MM. + 2 MM.							



# WRC also means Motorsport. We take part in World Series Renault 3.5

